

December 2011 Topspin Newsletter



5347 Sunset Blvd., Bldg. C Lexington, SC, 29072 Tel: (803) 951-8851 e-mail: topspinrsc@aol.com



Christmas Party-December 4th, 5:00 pm-9:00 pm

Food: Will be catered by you! We ask that you bring a dish (appetizers, dips, desserts, chili, cookies, hors d'oeuvres, etc.)

Cost: Free for all members

This year we would like to invite you to come spend a very relaxed afternoon with your fellow members at Topspin. We also would like for all of you to bring your best dish and showcase your cooking abilities. Topspin will provide beer and wine as well as lemonade and some snacks and music.



In addition, we will have a tennis round robin sign up open until 5:15pm and play will be from 5:30 to 6:45pm, and after that the courts will be wide open for member play. Finally, we will have a drawing for door prizes at 7:00pm so make sure to check in when you get here and get your raffle ticket.

Topspin really appreciates all of our members and we would love to share some Christmas spirit with you at this year's party.



RSVP by Friday December 1, 2011 by 5pm (please let us know who is coming with you, what dish will you be bringing, and if you plan to play in the tennis mixer.

Topspin will be closed from Saturday, December 24 through Monday, December 26 for the Christmas Holidays and on December 31 through January 1st for New Years. The Courts will be open of these days for your enjoyment.

Looking for Regular and Senior 3.0 Men Players and Regular 3.5 Men Players



We are trying to start a new regular and Senior 3.0 men's team and a 3.5 men's team in the spring league season at Topspin. Please e-mail Judit (topspinrsc@yahoo.com) or Carlos (topspinrsc@aol.com) to organize your first team meeting so we can continue working on building the spring teams.



Winter Preparation & Frozen Courts

We will begin preparing the courts for the cold winter weather during December. The back windscreens will be lowered down to allow more morning sunlight on the courts. This helps speed up the defrosting of a frozen clay court. If the temperature falls below freezing it is recommended that you call head and check the court conditions. Playing on a frozen clay court can be dangerous. They make for a hard slick surface. One sign of a frozen court is that it looks white and very dry. When the clay courts start to defrost, wet soft spots start to form. Normally it is easy to tell when a court is transitioning from being frozen to defrosting. The color of the court starts changing to a dark green and very often water appears on the surface. It is very easy to hurt yourself and damage the court when this happens. After they have started defrosting it normally takes several hours for them to become playable again.

Topspin Junior Program Beginner, Intermediate and Advanced

**Mondays and Wednesdays will stop
December 7th and will Restart January 9th**

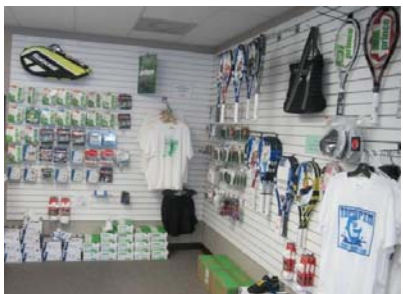


3:15-4:00 p.m. **Ankle Biters:** This program is designed to teach the fundamentals of tennis to very young players **from the ages of 4 through 6**. beginners are encouraged to sign up.

4:00-5:00 p.m. **High Energizers:** This clinic is designed to teach the fundamental for **ages 7-14**. Beginners and players who have not played any tournaments or JTL are encouraged to sign up.

5:00-6:00 p.m. **Master Blasters:** This is the most advanced group of the Mondays/Wednesdays clinic. Players in this group should have learned all the ground strokes, volleys and serves and should have played JTL or L5 tournaments or should be getting ready to do so. Most common **ages are 12 to 16**. **Players must qualify to be part of this group by receiving Tennis Pro's approval.**

For more information regarding costs and payment methods, call the Pro Shop at 951-8851.



Topspin Pro Shop

We now have a selection of High Performance Junior Racquets. They are designed for kids 6-12 years of age that want a high quality racquet.

Have you tried a pair of the new Babolat Black V-Pro All Court shoes?